

GC35 Two Way Rod Latch System

Features

- A design which is an industry-standard for securing large doors requiring latching on two edges. This is a 'deadbolt' system with 10 mm diameter rods driven by centre bush, and held extended by action of a strong spring. Right-hand and left-hand models are available, with many special options.
- Close door, turn inside / outside handle (or T-key) to 'throw' rods past door edge. System cannot be slammed.
- Centre bush rotates through 90° as shown to withdraw rods by 24 mm (each end). System is 'handed' by direction of rotation.

Material

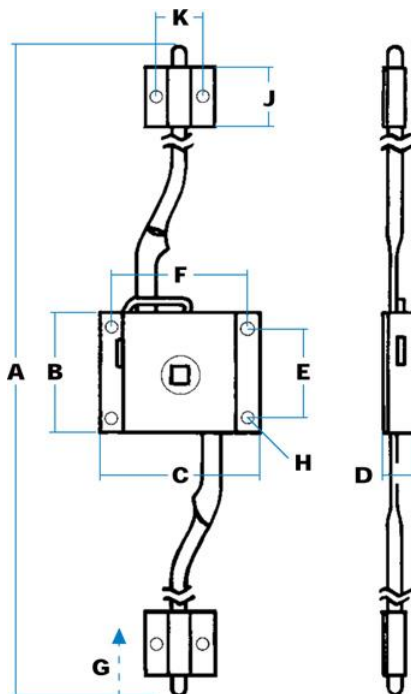
- Steel, zinc plated

Notes

- Latches are fully plant-on. Rod ends should be cut as required: guides are supplied with full system.
- Rod diameter 10 mm. Follow bush mounted centrally to accept 8 mm square shaft
- Special options include, special rod lengths to order, permanently-attached inside handle, 'male drive' (8 mm square) spindle on inside / outside of latch, and case hole dimensions (F = 62 mm)

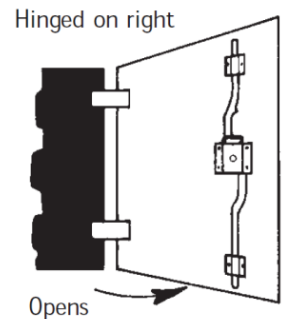
Sold Separately

- Latch guide **G18899**
- Packing plate for latch guides **G18898**



Right-hand rod latch system GC35-G18794 (includes guides) shown fully extended, from inside

Note on 'handing'
Sketch shows right side latch in position on interior of door which is hinged on its right-hand edge (when viewed from outside).



Part No.	Type	Direction	A	B	C	D	E	F	G	H	J	K
GC35-G18794	2 Way Rod Latch System	RH	Extended: 2210	50	67	14	38	57	24	4	25	22
GC35-G18795		LH										
GC35-G18794MO	2 Way Rod Latch System, Without Guides	RH	Retracted: 2160									
GC35-G18795MO		LH										